

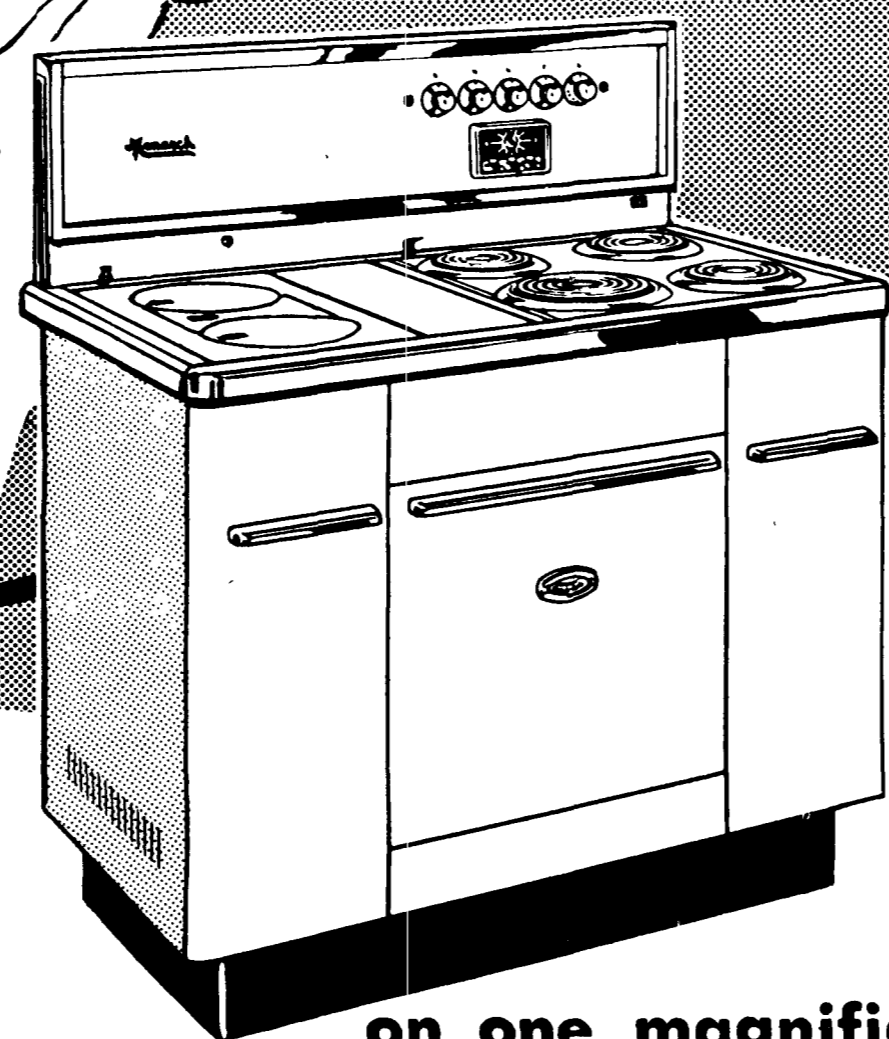
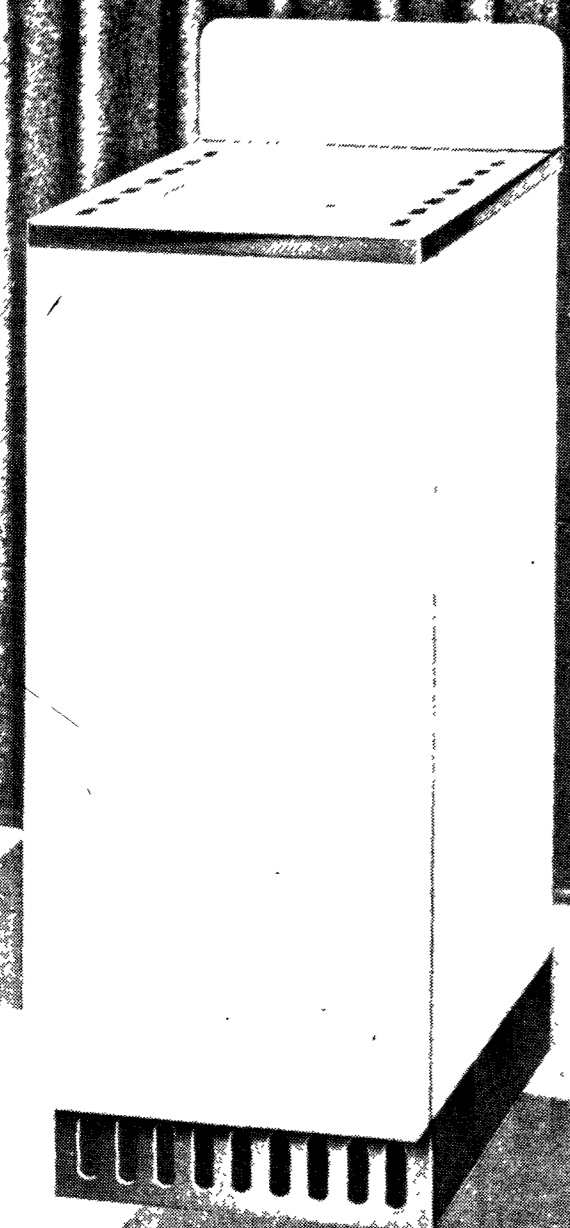
DON'T LET THE POWER SHORTAGE

WORRY YOU

YOUR CHOICE

you can
COOK, BAKE or ROAST
with
ELECTRICITY
COAL - WOOD or OIL
or in COMBINATION

Monarch



MONARCH KITCHEN HEATER MODEL 24PY

An outstanding MONARCH Kitchen Heater with no real competition. Its many features are amazing. It is really designed and built to give exceptional service with convenient drafts and damper for safe control. Beautiful and efficient -- can be used anywhere. Designed in correct proportions and height so it can be installed alongside a MONARCH Electric or Gas Range or used alone. It has genuine thin and unbreakable (Quick Heating) MONARCH "MALLEABLE IRON" Gooding top of anchor plate, covers and short center. These are neatly chrome plated for beautiful appearance and rust resistance. Firebox is large and deep -- has duplex grates for coal or wood. Large, tight ash pan in deep ash pit chamber is furnished for clean and convenient handling.

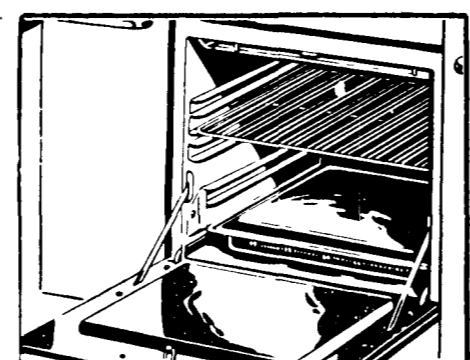
Monarch

SINCE 1896

on one magnificent

THEY'RE HERE!

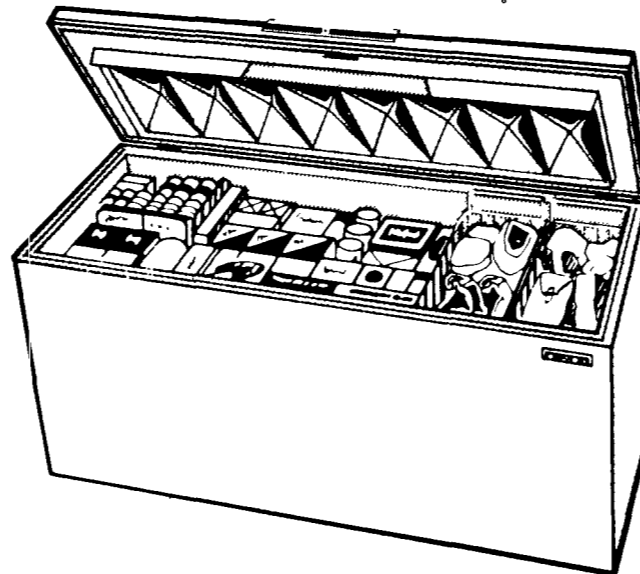
What a combination!" "Think of it!" A completely modern, up-to-date range with your choice of cooking fuel and cooking surfaces. A beautiful, practical Combination Range. A complete electric range, a complete coal-wood or oil range, and ONE KING SIZE OVEN for any of these fuels. Electric section contains Red Hot 'n



Seconds Unit and Super Speed Frying Unit. Coal-Wood Section has mirror-bright chrome finish malleable iron top and large deep fire box.



VERTICAL FREEZERS



HORIZONTAL FREEZERS

EXCLUSIVELY ON THE PENINSULA AT

WASHBURN'S

NEAH BAY, WASH.

CALL 645-2211 OR WRITE

Forks Forum

VOLUME 65 FORKS FORUM, THURSDAY, OCTOBER 11, 1978 PAGE 1 PRICE 15¢ NUMBER 7

CHAMBER OF COMMERCE

by Rayna Ararathne
The Chamber of Commerce had their regular noon meeting at the Vagabond, Tuesday, October 9th, with 16 people present. The guests, introduced were Glen Wiggins, Paul Hopkins, and Larry Bailey.
Mr. Gus Haley, President of the Port Angeles Chamber of Commerce, was the guest speaker. He spoke about a division type of Chamber of Commerce inclusive of a Membership Committee, a Community Development and an Economic Development branch, a Governmental Affairs division and a Retail Merchants branch. Mr. Haley, who has been logging since 1932 is the Manager of the M & R Timber Co., Inc. and has been a member of the Chamber of Commerce since 1966, expressed his desire for all Chambers of Commerce to become involved in and take definite stands on public issues.
The Port Angeles Chamber of Commerce has become very actively involved in the current campaign to conserve energy. They sent out informative pamphlets to the public to educate them about the energy crisis and how to conserve power. Mr. Haley said that it will take 22 months of normal rainfall to restore our normal water level.
The meeting was promptly adjourned at 1:00 p.m.

Little League Auxiliary

The Little League Auxiliary met on October 2nd. Discussion was held on what awards to present to the football players. The decision was made to take team pictures and present these to the boys, along with an achievement award. The team pictures will be taken on October 14th.
The VFW is giving a banquet for all players, cheerleaders, coaches, parents and other invited guests. The banquet will probably be held on Nov. 3rd.
For a money-making project the auxiliary will hold a raffle. The price of the raffle tickets are 50¢ each or 3/\$1.00. The prizes are:
1st--Dressy Besie and Dapper Dan Dolls.
2nd--15, 18 lb. turkeys
3rd--Elk Home Saw
The winning tickets will be drawn at the banquet. The winners will not have to be present to win. Support your Little League; buy your raffle tickets.

NOTICE

The Department of Motor Vehicles Driver's Licensing Division will be closed Saturday, October 20, in observance of Veteran's Day and will open again October 22 at 9 a.m.

Tips for the pheasant hunter

The Washington State Game Department in 1964 launched a new cooperative program between landowners and sportsmen called "Feel Free to Hunt". After 9 years of operation, Washington hunters will still be able to enjoy public access to prime, private farm and upland property--with the understanding that current economic problems will dictate hardships the hunter will have to bear.
Hunters must be cognizant that, due to higher prices for beef this year, more previously idle acreage will be grazed, resulting in less of pheasant habitat and more pooping.
Because pheasant hunters and cattle don't mix well, Feel Free to Hunt acreage in the Columbia Basin will be down slightly this year from last year's high of 183,596 total acres. In 1975 approximately 171,720 total acres will be under the Game Department private hunting agreement. About 65,000 Feel Free to Hunt acres will be in prime, irrigated farmland in the Columbia Basin during this hunting season.
Many farmers, who in previous years didn't have cattle, will either have stock or lease grazing this year. Further, many ranchers are cutting grain stubble this year, leaving practically no holding cover. Sweet corn fields, which in previous years were plowed in late fall or even spring, are being grazed this year.
The pheasant hunter, especially this year, should attempt to make personal contact with eastern Washington landowners prior to the season opening, to insure himself of a place to hunt on Opening Day.

SUPPORT UNITED WAY

Governor Dan Evans has issued an appeal to all Washington State citizens to support United Way campaigns in their areas.
"September and October traditionally are the months when United Way fund drives are conducted," Governor Evans said. "I urge all citizens to participate in this worthwhile endeavor."
Governor Evans said the role of voluntary agencies is vital in providing much-needed services to families and children throughout the state. "The partnership of government and private charitable endeavors provides services beyond the resources of either," Governor Evans said.
There are 19 United Way organizations in the State of Washington. Each conducts a single annual drive to support local health and welfare organizations in their locality. Agencies vary from city to city since each United Way organization is governed by a board of local citizens who make decisions relating to their own fund.
Adoption agencies, child care, family welfare, Travelers Aid, Red Cross, and youth agencies are members of United Way organizations in Washington State.

HOSPITAL REPORT

For the week ending October 7, 1978, the number of admissions was 8; discharges 5; emergency room visits, 71; outpatients visits, 115. The hospital ambulance corps responded to 7 calls.
Eugene Turner, M.D., James Mantooth, M.D. and John Wegmann, M.D., pediatricians from Port Angeles, are now taking appointments for Monday, as well as Wednesday. Their office

ITT WELCOMES HUNTERS

Nearly 100 of ITT Raydon's 370,000 acres of tree farm lands in western Washington will be open to sportsmen during the 1978 hunting season, according to C. V. Longgen, manager of the company's Northwest Timber Division.
The company's South Harbor Tree Farm in Pacific County, The Grays Harbor Tree Farm in Grays Harbor and Jefferson Counties, and the Clallam Tree Farm in Clallam and Jefferson Counties will be almost entirely open to hunting, Longgen said. Access to a few acres will be restricted because of hazards involved from active logging and construction work. Daytime access in some of these restricted areas will be possible and special arrangements are being made to open most restricted areas from weekend hunting.
Large wall maps giving detailed information concerning the restricted areas may be consulted at company offices in Hoquiam, Port Angeles, Shelton, Seattle and Forks.
The pocket-size, two-color hunting maps detail logging roads, rivers and streams in each of the company's Olympic Peninsula tree farms and are available at no charge.
The company's Promised Land Park on US 101, north of Hoquiam, and Tumbling Rapids Park near Forks, will again be held open for the convenience of hunters during the regular hunting season.
"Besides growing trees for products, providing payrolls, and paying taxes," said Longgen, "tree farms furnish outdoor recreation at its best." He urged hunters to hunt safely and to exercise caution when traveling logging roads.

Reception planned

A reception will be held Sunday, October 14, honoring the Nurse Practitioners and the Forks Community Hospital Medical Staff. The reception will be held from 2 to 4 p.m. at St. Anne's Mission Social Hall.

GO CLASSIFIED

GIVE A GIFT SUBSCRIPTION TO THE FORKS FORUM. IT'S LIKE A LETTER FROM HOME.



More visitors have left the beaches now as summer ends. The waters still flow, however, and the gulls still swoop as they see the blue skies over the Pacific. A few clouds gather beyond James Island assuring us of the storms to come. As for now, the sun shines and a light breeze blows and all is peaceful here at Rialto.

FORKS TAKES PLEASURE TRIP TO SOUTH BEND

(or) What! Again?

On a crisp fall night Southbend took the lead-off and started off with a first down in two plays. But then the Forks Spartans defense coached by Hutchinson seemed to settle down, as at the end of the next series Southbend was forced to punt. It looked as though Forks offense had things going, as they ran 3 plays for 42 yards down to Southbend's 31 when the Indians intercepted a Kenny Olson pass sent down the field to Larry Vincent. With exchanges of plays and punts, Southbend had good field position on their own 41 to start a massive conservative drive. Using 11 plays Southbend's Fuf-ford drove from the 1 yard line to give the Indians a six to nothing lead.
The Forks Spartans started off their next drive after a 17 yard run back by Hard Rehnold was penalized 15 yards for a clip, giving Forks poor position on their 18 yard line. But with Olson nudging his plays between Blair, Rehnold and the pass, the not-to-be-done-in-Spartans moved the ball to Southbend's 45.
Then with a fair pass from Olson to #90, Oros hot-footed it for 45 yards down the sideline as Forks retallied for the score.
With the score, Forks 6 - Southbend 6, the Spartan defense held Southbend to 5 plays when Blair intercepted a "weather" pass and scrambled 48 yards for the end-zone. Even though Blair's run was called back, Forks had position on their own 49 with less than a minute remaining in the first half.
Then after three plays, Olson again connected to Oros for a 47 yard pass play which brought the crowd to their feet as no time remained on the scoreboard clock. Again the conversion was unsuccessful as the half ended--Forks 12, Southbend 6.
To start off the second half of play, the Spartans marched for nine plays until their second turnover came when Kenny Olson fumbled and Fufford recovered for Southbend. In 4 plays, the Indians were again forced to punt by the tough Spartan Defense and Forks took over on their own 44. 8 plays later Forks' Oros punted 37 yards into the endzone setting up the Indians first down on their own twenty.
As the third quarter started, Zellar intercepted a pass on the first play giving Forks position on Southbend's 22 yard line. Four plays later Oros showed he could catch in traffic as Olson hit with a 20 yard pass on the one yard line. The next play Olson plunged for six more and threw to Oros for the conversion making the score Forks 20, Southbend 6 with 10:36 remaining in the 4th quarter.
The rest of the game gave something to the Forks second and third units as Jeff Hill and then Brent Williams quarterbacked the victorious Spartan Ball Club. Now we only have to look forward to the game this Friday against Raymond. It should be a wing-dinger with Blair's running and Olson to Oros pass combinations against a tough Raymond team. The pressure is on the Spartan defense. Hutchinson has showed his defensive unit can play ball, but can they get that

Voter Information Services

On November 6, voters in the State of Washington will face the first annual general election in the state's history. Therefore, Secretary of State Lou Kramer, in news conferences held across the state, announced plans to implement a comprehensive Voter Information Service in the Election Division of his Olympia office.
"We were very pleased with the success of voter information services established in the office last year," he said, "and I think it is important that we continue to provide voters with additional information this year."
The Secretary of State's Voter Information Service will include the opening this morning of a toll-free telephone line to Olympia; the publication of a voters pamphlet in both English and Spanish; cassette tape recordings of all ballot issues for citizens with impaired vision; a series of public service announcements for radio and television outlets throughout the state; a series of objective articles on all of the issues for newspaper use; a speakers bureau designed to provide organizations with the names of speakers in their areas to discuss ballot issues upon request via the toll-free line; and the placing of legal advertisements in all media statewide.
Secretary Kramer said that any citizen can obtain information about the coming election by calling the toll free telephone number 1-800-582-0202. "The call is free," he said, "so I'm encouraging all voters to take the time to become truly informed voters."

Census Bureau to take survey

A sample of households in this area will take part in the Federal Government's annual survey of school enrollment to be taken the week of October 15-19 by the Bureau of the Census, part of the US Department of Commerce's Social and Economic Statistics Administration.
John E. Tharalson, Director of the Bureau's Data Collection Center in Seattle, said that interviewers will visit homes to obtain information about household members attending school, from nursery school through college, including those taking vocational, technical, or business courses.
Results of the October 1978 survey showed that 60.1 million persons 3 to 24 years old were in school. Elementary school enrollment (kindergarten through eighth grade) had declined by about 1.4 million since the fall of 1971 because of a decline in the number of births during the 1960's. Although college enrollment had increased considerably in the years since 1962, a lower proportion of college-age men were in college than during the late 1960's, while the college enrollment rate for women has remained about the same since the late 1960's.
School enrollment questions will be in addition to the ones asked regularly in the monthly survey on employment and unemployment conducted nationwide by the Bureau for the US Department of Labor.
The survey provides a continuing measure of conditions in the labor force. The August survey found the Nation's employment situation little changed from July. The unemployment rate, at 4.8 percent, was essentially the same as in June and July but was substantially below the 5.6 percent of a year earlier. After elimination of seasonal fluctuations, total employment in August remained at 84.4 million, about the same as in the preceding two months.
About 50,000 households across the country, scientifically selected to represent a cross section of American households, take part in this monthly survey. All information provided the Bureau is confidential by law and can be published only as statistical totals in which no individual or household can be identified.
Interviewees who will visit households here are: Marian Downing, Port Angeles, Wash., and Ted Miller, Oak Harbor, Wash.

Little League Action

Scores of last week's Little League action:
Packers 42 - Lumberjacks 0
Vildings 26 - Steelers 6
Giants bye
Next Sunday's action will be a double header in Forks starting at 1 p.m. All 15 Forks teams will be playing. Support our teams and enjoy an afternoon of football action.

WEATHER

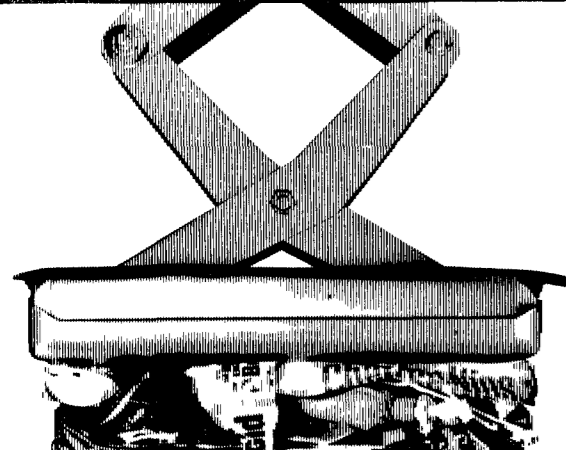
	H	L	P
October 1	61	37	---
October 2	60	33	---
October 3	63	37	---
October 4	64	32	---
October 5	59	36	.24
October 6	52	36	---
October 7	53	38	1.

Courtesy of Jerry King, Weather Station, Forks, Washington.

Total rainfall through October 1, 1978: 86.24 inches.

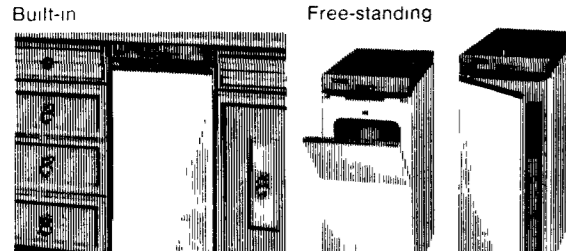
RUBBER STAMPS MADE TO ORDER. CALL THE FORKS FORUM. 374-6180.

the Big Squeeze is on!

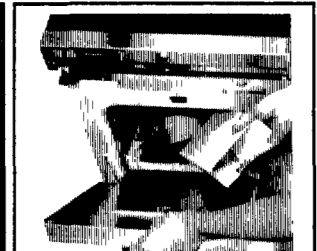


New MONARCH Trash Compactor packs your problems away

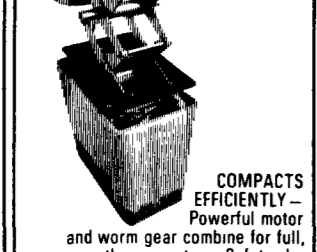
Why carry out those bulky bags of trash every day when you can make it so much easier for yourself with a Monarch Compactor? Anything that shouldn't be put into a sink disposer--rags, bottles, boxes, cans, etc.--can be compacted into an 18 lbs. block, 25-pound, disposable bag.



Come see the new Monarch Compactors today.



EASY STAND-UP LOADING--for a bottle or a basket. No bending or stooping. Just flip open a door, no heavy drawer to pull out each time.



COMPACTS EFFICIENTLY--Powerful motor and worm gear combine for full, smooth compaction. Safety device prevents jamming.



EASY CLEANING--Galvanized interior needs only occasional wiping plus disinfectant spray to stay clean and odor-free.



TWO-WAY SAFETY LOCK--(1) unit can be loaded, but not operated. (2) unit cannot be opened or operated.

SANITIZED-LOADING BASKET--"Big" basket allows safe disposal of spillage, injury or clothing from glass, metal or liquid.





Lee Olson (10) was finally brought down by a Sequim defender after a 12 yard gain Saturday morning in Forks as the Spartan Red defeated their cross county rivals by an 18 to 6 score in junior high action. ... by Lorraine Arethald

IMMUNIZATION ACTION MONTH

Many people are no longer afraid of the most serious childhood diseases -- polio, measles and German measles, diphtheria, whooping cough, and tetanus. In fact, most people probably don't even think about them until those diseases strike their own children, said Wilson Corcoran, Region X program director of the Center for Disease Control (CDC) of HEW's Public Health Service.

Corcoran's comments were occasioned by the U. S. PHS having designated this month (October) as "Immunization Action Month" to encourage parents to make sure their children are fully vaccinated.

N.W. Pulp and Paper Assoc. report

To be successful, energy consumption reduction efforts "must be based on cooperation between industry, the general public and regulatory agencies," according to a spokesman for the Northwest pulp and paper industry.

Oliver P. Morgan, Northwest Pulp and Paper Association executive secretary, said a close look at Northwest power consumption trends "reveals that involuntary restrictions on one segment of society is not a realistic answer to the energy crisis."

Bonneville Power Administration energy consumption projections for the period from July 1973 to July 1974 within the SPA's Western Group Area indicate a 34.4 million kilowatt-hour residential or domestic consumption as compared to a 55.1 million kw total industry requirement and a 7.3 billion kw pulp and paper industry requirement.

"Energy consumption restrictions solely on industry would be a very superficial approach to solving the problem, particularly since power requirements are not uniform throughout industry," Morgan said.

In the pulp and paper industry, he pointed out, the operation of equipment requires a specific amount of energy, so that curtailment of production does not necessarily produce a commensurate reduction in power consumption.

In most instances, a 50 percent reduction in production will result in an approximately 25 percent reduction in power consumption, while causing significant unemployment and economic loss, Morgan said.

Also, power loads within the pulp and paper industry are not weather-oriented and are essentially constant day and night, Morgan pointed out. He explained that the majority of power consumed at a pulp and paper mill is not for heating or lighting but rather for production, a factor which "indicates that regulation of energy consumption through decreased power

supply during certain times of the day or on a seasonal basis is not a feasible approach to conserving energy within the pulp and paper industry."

Morgan said on-going voluntary programs at each of the mills in the Northwest pulp and paper industry indicate that consumption reductions ranging from two to five percent are possible through decreasing lighting loads and all other non-essential energy uses.

"The problem inherent in the pulp and paper industry is that energy consumption reductions beyond those achieved through decreasing lighting loads and other non-essential uses are possible only by shutting down operations," Morgan said.

"The problem inherent in the pulp and paper industry is that energy consumption reductions beyond those achieved through decreasing lighting loads and other non-essential uses are possible only by shutting down operations," Morgan said.

"If we are truly faced with an energy crisis, for instance, the large blocks of energy presently being consumed to meet environmental requirements would be re-examined to determine net worth to the public. If it is discovered that protecting the environment on the one hand by operating pollution control equipment is temporarily jeopardizing immediate environmental needs, adjustments should be made."

Should mandatory energy consumption reductions be necessary, Morgan urged that a procedure be developed which would allow each pulp and paper mill to deal with an individual reduction requirement on a per month basis.

"This would allow each company to employ the most efficient method of reduction in terms of its individual employment and economic situation," Morgan also recommended that utilities be required to adjust energy charges in proportion to decreased demand if mandatory reduction is imposed on industry.

Also, power loads within the pulp and paper industry are not weather-oriented and are essentially constant day and night, Morgan pointed out. He explained that the majority of power consumed at a pulp and paper mill is not for heating or lighting but rather for production, a factor which "indicates that regulation of energy consumption through decreased power

supply during certain times of the day or on a seasonal basis is not a feasible approach to conserving energy within the pulp and paper industry."

Morgan said on-going voluntary programs at each of the mills in the Northwest pulp and paper industry indicate that consumption reductions ranging from two to five percent are possible through decreasing lighting loads and all other non-essential energy uses.

"The problem inherent in the pulp and paper industry is that energy consumption reductions beyond those achieved through decreasing lighting loads and other non-essential uses are possible only by shutting down operations," Morgan said.

"If we are truly faced with an energy crisis, for instance, the large blocks of energy presently being consumed to meet environmental requirements would be re-examined to determine net worth to the public. If it is discovered that protecting the environment on the one hand by operating pollution control equipment is temporarily jeopardizing immediate environmental needs, adjustments should be made."

for the Winchester Arms Co. for 8 years. He'd been a heavy equipment operator in logging operations in the Quebec-Clearwater area for many years and also had driven school bus for many years between Clearwater and Oquima.

He is survived by his wife Luella, at his home, five sons: Elliott, Seattle; Rev. Elton Hamilton, Missagu, Ontario, Canada; Vernon, Huntington Beach, California; Stanley, Fairbanks, Alaska; Bill A., Clearwater; also, two daughters: Mrs. Evelyn McClain, Eagle Mountain, California; Mrs. Barbara Nelson, Toppleish, Washington; and his sister, Mrs. Mildred Harding in Oregon. 16 grandchildren, 19 great-grandchildren.

Funeral services will be at 1 p.m. Wednesday, in the Coleman Chapel in Hoquiam with Marcus Copeland. Interment will be in Sunset Memorial Park in Hoquiam.

NEW POSTAL MONEY ORDER SYSTEM

A new postal money order system that will provide added safety and savings to both the customer and the U.S. Postal Service will be introduced in Forks on October 13.

Buyers of the new money order will pay one fee for money orders valued from \$50.01 to \$300, the new limit on amounts per order. Fees for the lesser amounts will remain the same.

Under the old system, a \$300 money order would involve three 40-cent fees for a total of \$1.20. The new system will provide a 2/3 fee reduction to 40 cents.

"For example," the Postmaster said, "the buyer of a \$130 money order under the existing system pays a 40-cent fee for the first \$100 and another 30-cent fee for the additional \$30. The same money order, under the new program, will cost only 40 cents. The new system, soon to be phased in throughout the nation, is another example of an improved postal product, not only at no additional cost to our customer, but often at less cost."

There is also another benefit. The system for handling the new money orders at the Postal Data Center in St. Louis -- the most advanced paper forms processing system of its type in the world -- is more efficient than the old manual system.

A budget hearing, in accordance with the statutes of the State of Washington, was conducted and a budget for the ensuing year was adopted by the Board. The budget, reflecting the growth of the past few years and the requirement for capital improvements in the coming year, was the largest in the District's history.

The Board also pointed out some other benefits to buyers of the new money orders: --The larger customer receipt will not be less easily misplaced, but it will enable the Postal Service to provide faster claim service through machine processing.

--The safest means of sending money -- the larger customer receipt will not be less easily misplaced, but it will enable the Postal Service to provide faster claim service through machine processing.

Peninsula College announces the appointment of Shirley Ringmuth as coordinator of continuing education classes in the Forks area.

Peninsula College announces the appointment of Shirley Ringmuth as coordinator of continuing education classes in the Forks area.

Peninsula College announces the appointment of Shirley Ringmuth as coordinator of continuing education classes in the Forks area.

THE FORKS FORUM

A Weekly Newspaper Published Every Thursday at Forks, Clallam County, Washington 98331. FORKS BROADCASTING CO. OWNER GORDON OTOS. PUBLISHER BETTY OTOS. NEWS & COPY EDITOR

Subscription Rate: 1 year (in advance)... \$5.00 Display Advertising: Per Column Inch... \$.90 Classified Advertising, Minimum Charge... \$1.00 A 25¢ service charge will be added to each account if billed a second time. Thank you.

Address all mail (subscription, change of address forms No. 3579, letters to the Editor, etc.), to THE FORKS FORUM, P. O. BOX 300, FORKS, WASHINGTON 98331.

Entered as second class mail matter at the Post Office at Forks, Washington, under Act of March 3, 1879.

cy will be even safer because the new form will be even more difficult to alter.

--Recipients of money orders will be able to cash them at 42,000 post offices and stations and 23,000 banks and branches throughout the country, three times the number of outlets available for any competing money transfer system.

PUD BOARD MEETING

The Board of Commissioners of Clallam County P. U. D. authorized the issuance of revenue bonds in the amount of \$1,750,000 at their regular weekly meeting of October 1, 1978.

The sale was on a negotiated basis and resulted in a coupon interest rate of 6%. With the bond discount, the effective interest rate on the issue will be 5.18%.

Proceeds from the bond sale will be used for the reconstruction of the District's transmission line which extends from Port Angeles to Discovery Bay. In addition, the transmission line from Sappho to Forks will be rebuilt and reconducted.

A budget hearing, in accordance with the statutes of the State of Washington, was conducted and a budget for the ensuing year was adopted by the Board. The budget, reflecting the growth of the past few years and the requirement for capital improvements in the coming year, was the largest in the District's history.

The Board also pointed out some other benefits to buyers of the new money orders: --The larger customer receipt will not be less easily misplaced, but it will enable the Postal Service to provide faster claim service through machine processing.

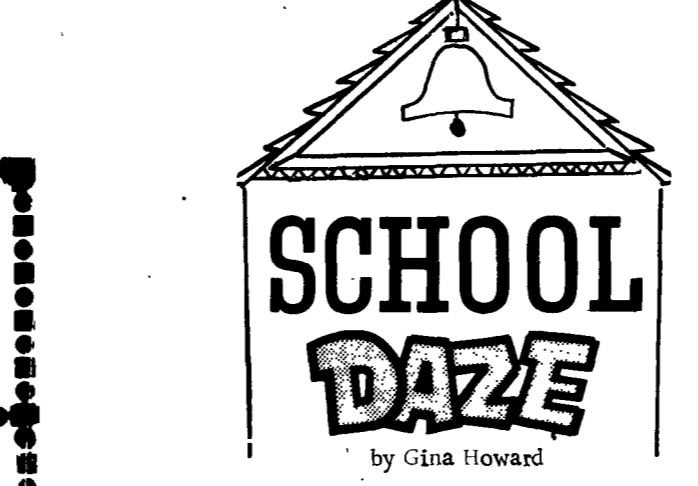
--The safest means of sending money -- the larger customer receipt will not be less easily misplaced, but it will enable the Postal Service to provide faster claim service through machine processing.

Peninsula College announces the appointment of Shirley Ringmuth as coordinator of continuing education classes in the Forks area.

Peninsula College announces the appointment of Shirley Ringmuth as coordinator of continuing education classes in the Forks area.

Peninsula College announces the appointment of Shirley Ringmuth as coordinator of continuing education classes in the Forks area.

Peninsula College announces the appointment of Shirley Ringmuth as coordinator of continuing education classes in the Forks area.



The sophomore class had a car wash planned for the fourth time in a row Saturday, October 6, and they showed up... but so did the freshman class at another gas station. The sophomores didn't worry too much, however, and made quite a bit of money.

Homecoming week is coming so don't think the school kids have gone strange when you see them dressed in all kinds of ways such as the old time days back in the 1950's.

The Beaver Parent Club will hold its annual Christmas Card and gift sale Monday, Tuesday, and Wednesday, October 15-17, from 10 a.m. to 8 p.m. at the Dean Hum home.

The Beaver Parents Club Christmas Card Sale will be held next Monday, Tuesday, and Wednesday (Oct. 15-17), at the Elaine Hum residence from 10 a.m. to 8 p.m.

West End Republican Club will meet Monday evening at 8:00 p.m. at the Beaver School gymnasium.

MAURICE MACKAY Funeral services for Maurice Mackay, 59, Forks, were held Sat. at 11 a.m. at Forks Funeral Home.

"Funny Car Summer" Wednesday, October 17 Showtimes 5:00 -- 7:00 7:00 -- 9:00 Adults 1.75 Children75

Heckman Motors, Inc. DATSUN SALES & SERVICE 1230 E. 1st Street 452-9718

WANT TO KNOW WHAT'S HAPPENING ON THE PENINSULA THE YEAR AROUND? SUBSCRIBE TO THE FORKS FORUM, JUST \$5.00 PER YEAR MAILED ANYWHERE.

Ballot Title: Shall a graduated net income tax be authorized... The Law as it now exists: The state constitution now effectively prohibits the imposition of a tax on or measured by net income.

Ballot Title: Shall a graduated net income tax be authorized... The Law as it now exists: The state constitution now effectively prohibits the imposition of a tax on or measured by net income.

Ballot Title: Shall a graduated net income tax be authorized... The Law as it now exists: The state constitution now effectively prohibits the imposition of a tax on or measured by net income.

Ballot Title: Shall a graduated net income tax be authorized... The Law as it now exists: The state constitution now effectively prohibits the imposition of a tax on or measured by net income.

Ballot Title: Shall a graduated net income tax be authorized... The Law as it now exists: The state constitution now effectively prohibits the imposition of a tax on or measured by net income.

TYEE-SAPPHO-BEAVER NEWS

Mr. and Mrs. Dale Davids drove to Hillsboro, Oregon, on Friday afternoon to visit with some friends. They returned home Saturday evening.

Mr. and Mrs. A. M. Needman spent four days last week relaxing at Ocean Shores.

Mr. and Mrs. Clyde Goukey and family drove to Eastern Washington over the weekend to pick up fruit.

Mr. and Mrs. Buzz Munn and family, Mr. and Mrs. Charles Crandall and family, and Mr. and Mrs. Leonard Larocin and family, spent the weekend in Granite Falls for the "Railroad Days" celebration.

Mr. and Mrs. Mick Davis and Mr. and Mrs. Dean Hum flew to Oakland and the S infari Travel Club to attend the University of Washington vs. California at Berkeley on Saturday.

Mr. and Mrs. Jack Davis of Albany, Oregon, spent Thursday, Friday and Saturday visiting with Mrs. Davis' sister, Leta Kilham.

MAURICE MACKAY Funeral services for Maurice Mackay, 59, Forks, were held Sat. at 11 a.m. at Forks Funeral Home.

"Funny Car Summer" Wednesday, October 17 Showtimes 5:00 -- 7:00 7:00 -- 9:00 Adults 1.75 Children75

Heckman Motors, Inc. DATSUN SALES & SERVICE 1230 E. 1st Street 452-9718

WANT TO KNOW WHAT'S HAPPENING ON THE PENINSULA THE YEAR AROUND? SUBSCRIBE TO THE FORKS FORUM, JUST \$5.00 PER YEAR MAILED ANYWHERE.

Ballot Title: Shall a graduated net income tax be authorized... The Law as it now exists: The state constitution now effectively prohibits the imposition of a tax on or measured by net income.

Ballot Title: Shall a graduated net income tax be authorized... The Law as it now exists: The state constitution now effectively prohibits the imposition of a tax on or measured by net income.

Ballot Title: Shall a graduated net income tax be authorized... The Law as it now exists: The state constitution now effectively prohibits the imposition of a tax on or measured by net income.

Ballot Title: Shall a graduated net income tax be authorized... The Law as it now exists: The state constitution now effectively prohibits the imposition of a tax on or measured by net income.

Ballot Title: Shall a graduated net income tax be authorized... The Law as it now exists: The state constitution now effectively prohibits the imposition of a tax on or measured by net income.

Ballot Title: Shall a graduated net income tax be authorized... The Law as it now exists: The state constitution now effectively prohibits the imposition of a tax on or measured by net income.

TAXPAYERS ASK IRS

Q. My brother, sister, and I each help pay for my mother's support. Can any of us claim her as a dependent?

A. If none of you contribute more than 50% of your mother's support, one of you who individually contributes more than ten percent may claim the exemption.

Of course, the person who claims your mother as a dependent must meet all the other dependency tests and, together, all of you must have contributed more than half of your mother's total support.

What would you do with the \$1000 if you had it? You giggle. Imagine--at a time like this, you stand there and giggle like an idiot.

Ladies, can you imagine how you might feel if you were downtown Forks one morning and saw a great crowd of people in the street in front of the Variety Store?

What would you do with the \$1000 if you had it? You giggle. Imagine--at a time like this, you stand there and giggle like an idiot.

Ladies, the new chapter of Toastmistress can help you find out what Toastmistress can offer you, plan to visit the next meeting: October 23, Tuesday evening at 8:00 p.m. at the Olympic Theater.

WANT TO KNOW WHAT'S HAPPENING ON THE PENINSULA THE YEAR AROUND? SUBSCRIBE TO THE FORKS FORUM, JUST \$5.00 PER YEAR MAILED ANYWHERE.

Ballot Title: Shall a graduated net income tax be authorized... The Law as it now exists: The state constitution now effectively prohibits the imposition of a tax on or measured by net income.

Ballot Title: Shall a graduated net income tax be authorized... The Law as it now exists: The state constitution now effectively prohibits the imposition of a tax on or measured by net income.

Ballot Title: Shall a graduated net income tax be authorized... The Law as it now exists: The state constitution now effectively prohibits the imposition of a tax on or measured by net income.

Ballot Title: Shall a graduated net income tax be authorized... The Law as it now exists: The state constitution now effectively prohibits the imposition of a tax on or measured by net income.

Ballot Title: Shall a graduated net income tax be authorized... The Law as it now exists: The state constitution now effectively prohibits the imposition of a tax on or measured by net income.

Ballot Title: Shall a graduated net income tax be authorized... The Law as it now exists: The state constitution now effectively prohibits the imposition of a tax on or measured by net income.

Ballot Title: Shall a graduated net income tax be authorized... The Law as it now exists: The state constitution now effectively prohibits the imposition of a tax on or measured by net income.

Ballot Title: Shall a graduated net income tax be authorized... The Law as it now exists: The state constitution now effectively prohibits the imposition of a tax on or measured by net income.

SMOKEY SAYS: SOMETIMES A CONTROLLED FIRE IS USED BY FORESTERS TO REDUCE DANGEROUS FIRE HAZARDS... IT'S A JOB FOR EXPERTS ONLY.

RUBBER STAMPS MADE TO ORDER. CALL THE FORKS FORUM 374-5330.

The new Marietta Mobile Court 4 blocks S. E. of Post Office now open for occupancy. For information call 374-6350.

FORKS REALTY CO. P. O. BOX 253 FORKS, WASH. 98331 PHONE 374-5559

BUY OR RENT -- 1/4 acre lots for mobile homes. Complete with septic system, electricity, city water, and telescopic hookup. Move in today.

WATCH THE CONSTRUCTION of your home and move in by Feb., 1974. 3 bedrooms, 1-1/2 baths, fireplace, double car garage on wooded lots in Terra Eden, \$27,000.00.

5 ACRE PARCELS -- Wooded, good drainage, near town. A little land - a lot of living. \$12,500.00.

Nikki Klahn Realtor 374-5559

COMPLETE AUTO SERVICE

TUNE-UPS ENGINE REPAIR TRANSMISSION-POWER TRAIN BRAKE SERVICE WINDSHIELDS YOUR FORKS FORD DEALER CALL 374-6556

ATTENTION LOGGERS!

HAS THE HIGH COST OF INSURANCE ON YOUR TRUCKS EQUIPMENT, AND LIABILITY GOTTEN OUT OF LINE? GELLOR INSURANCE OFFERS COMPETITIVE RATES ON LOG TRUCKS, LOGGING EQUIPMENT AND THAT EVER-NECESSARY LOGGING AND LUMBERING LIABILITY, RE-MEMBER OUR BUSINESS IS PROTECTING YOUR BUSINESS

CALL US DAY OR NIGHT 457-5416-5330 to 9:30 p.m. 457-7626 to 9:30 p.m. William B. Gellor, William M. Gellor, Bruce A. Clampett

GII IN FORKS: Bob Sorenson 374-5038 GELLOR INSURANCE, INC. 214 EAST FIRST STREET PORT ANGELES, WASHINGTON 98363

LOOK IN THE WANT ADS

FOR SALE

FOR SALE: Coffee table, dining room table, rocker, swivel chair, washer, gas dryer, girls 20" bike. 327-3316. 6-4tc

FOR SALE: 1940 Ford deluxe 2-door sedan. 327-3560. 50-5tc

1963 Ford Falcon Station Wagon. \$200.00 or trade for good Honda 90 or fishing boat. Ph. 374-6586. 7-2tp

FOR SALE: Gas Water Heater, capacity 90 gallons. \$25. Call after 5, 374-6519. 7-1tp

FOR SALE: Misc. furniture and appliances. 374-6362. 7-1tp

FOR RENT

FOR RENT: Duplex; new 2 bedroom, carpets, appliances, carpet. Wooded area close to town. \$160.00, plus deposits. 527-3359. 7-1tp

FOR RENT: Two mobile home spaces with carpets and storage sheds. Alder Grove Mobile Home Park. 374-6898. 5-4tc

REAL ESTATE

EXCELLENT VIEW - Upper level of Valley View Addition - View from living room, formal dining room, and family room-kitchen. Large 16' long kitchen with island eating area, 4 bedroom, 2 full baths, oversized 2 car garage, electric radiant heat, redwood and black exterior with Contemporary Entry, and lawn is planned. See house during day or call 374-5037 evenings. 7-4tc

Now Open: Dog grooming, call breeds. Call 374-5178. 7-5tc

FOR SALE: 3 bedroom house, fireplace, carpeted, drapes. Large double garage with work area, fenced back yard with garden spot, on corner lot in 3rd Mansfield add. Phone 374-6788. 7-4tp

FOR SALE: Upper Soleduck comfortable 3-bedroom home, extra garage and work shop. Year around creek. Call evenings and weekends, 327-3325. 5-4tc

Downtown business property for sale with living or rental unit plus large lot. Call 374-6386 48-5tc

INTERESTED IN five to 20 acre undeveloped tracts in or near Forks city limits. Principals only. C. L. Ellis, Box 485, Denver, Colorado 80201. 5-2tp

FOR SALE: One 2-bedroom house and one 1-bedroom house on corner lot across from Post Office and VFW Club. Call 374-5142. 50-1tc

FOR SALE: Lots in Duncan's Addition on Page Road. No payments or taxes till 1974. All utilities in underground. Call 374-5116 28-1tc

SERVICES

NOW OPEN! Shake Mill Supply-bearing, belts and other supplies. Come out and browse. Beaver, Washington-next to Loop Tavern. 8-1tc

ROTARYILLING... yards, garden spots. Ed Duncan 374-6506 9-5tc

WANTED: bookkeeping accounts to maintain. Income Tax Preparation. Willard Perry Accounting and Tax Service. Phone 374-8922 20-5tc

HOT TANK CLEANING. Cylinder heads, manifolds, tanks, metal filters, brake parts, engine blocks, etc. VALVE GRINDING. Call 374-5423 26-5tc

ELECTROLUX SALES AND SERVICE Mrs. H. O'Neal 809 East 8th Port Angeles, Wash. Call Collect: 457-6914 20-5tc

BUY ALL YOUR OFFICE SUPPLIES AT THE FORKS FORUM, IN THE KVAC BUILDING. 6-4tc

OLYMPIC DISPOSAL, RURAL GARBAGE services now serving Forks, LaPush, Tyee, Quillayute, Beaver and Hockleyville. Call Zenith 8495 (toll free) at Sequim or write P.O. Box 691, Sequim, Wash. 98382. In Forks call 374-5837 after 5:00 P.M. 8-1tc

DUALCLEAN SERVICES Carpets, Rugs & Upholstery For Appointment in Forks Call Diane Edwards 374-6480 5-1tc

FOR ALL BUILDING MATERIALS SEE Angeles Grand and Supply Co. Cable Portland Cement. ANGELES GRAVEL & SUPPLY CO. INC., Port Angeles Phone 457-3371 62-5tc

WELL DRILLING SERVICES. Commercial and domestic; pump installation, sales and service. Call RON HANEY, 374-5223. 4-6tp

BLUE FLAME SERVICE Your local appliance services. Authorized service for Sears, Coast to Coast, Gaffers and Sattlers, Magie Chef, Coleman Furnaces, Westco Electric Furnaces, all electric and gas major appliances. Full line of mobile home and camper equipment available to order. Service available to Quetz, LaPush, Neah Bay, and all areas in between. Phone 374-6307. 28-5tc

TO KADBI: Script-type typewriter for standard-type typewriter of equal value. 374-5486. 7-1tp

NEW-USED garments, yarn crochet and embroidery thread, paperback and comic books. Penny-Proffitt Mart, 1421 East First, Port Angeles. 7-2tp

Original Cliffs Silver designs by Kathy Cunningham. 374-6781. 7-3tc

STILL THE BEST selection of firearms and shooting supplies on the Peninsula. PLUS the one important item the others CAN'T give --- product knowledge and service. Katz's Gun Shop, 1134 East Front, Port Angeles. 5-8tp

DOG GROOMING: Call Sue Perkins at 374-6221. 7-1tp

WANTED: Pop bottles, beer bottles, aluminum cans. 327-3316. 6-2tp

Original Cliffs Silver designs by Kathy Cunningham. 374-6781. 7-3tc

SOMETHING DIFFERENT GIFT SHOP AND LOGGING MUSEUM. Open 12 to 5 Monday through Saturday... one half mile south of Forks. 6-4tc

SEWING CLASSES, beautiful fabrics, patterns, and notions... all available at the COUNTRY CORNER, your COMPLETE SEWING CENTER, end of Bogachell Way. Open 10-5. Call 374-5101. 43-1tc

ALCOHOLIC ANONYMOUS closed Meeting Tuesday, 8 p.m., open meeting Friday 8 p.m. All-nation meetings Tuesday, 8 p.m. Public Welcome. "St. Anne's Mission". For information call 374-5254 or 374-6271 10-5tc

RUBBER STAMPS MADE TO ORDER. CALL THE FORKS FORUM 374-5180. 20-5tc

Funks Mobile Sales & Supplies. 12 wide, 14 wide and double wides. We buy used Mobile Homes. 374-6369. 35-5tc

MARGIE'S ROCK SHOP: Behind Union Station. Sterling silver and turquoise jewelry. Hand crafted jewelry. Beads for macramé and Indian Craft. Safety Pin Bead Kits. Jewelry mountings and stones for them. Complete lapidary equipment---tumbled, rock saws, arboris, and grits. Books on all subjects of rocks, beads and silviculture. Open 10 a.m. to 6 p.m. 6-4tc

BACK OF UNION STATION 374-6307 COFFEE POTS, TOASTERS, FRY PANS, MIXERS, ETC. OR DROP OFF AT MARGIE'S ROCK SHOP

COMMERCIAL RESIDENTIAL WORK HOT POINT APPLIANCE DEALER SPEED ROOPER SERVICE AVAILABLE Located In The Baker Building Next To The Standard Station CLALLAM BAY 963-2512

LANNOYE MOTOR CO. Jeep & Plymouth Dealer PARTS & SERVICE 230 E. 1st Port Angeles Phone 437-4406

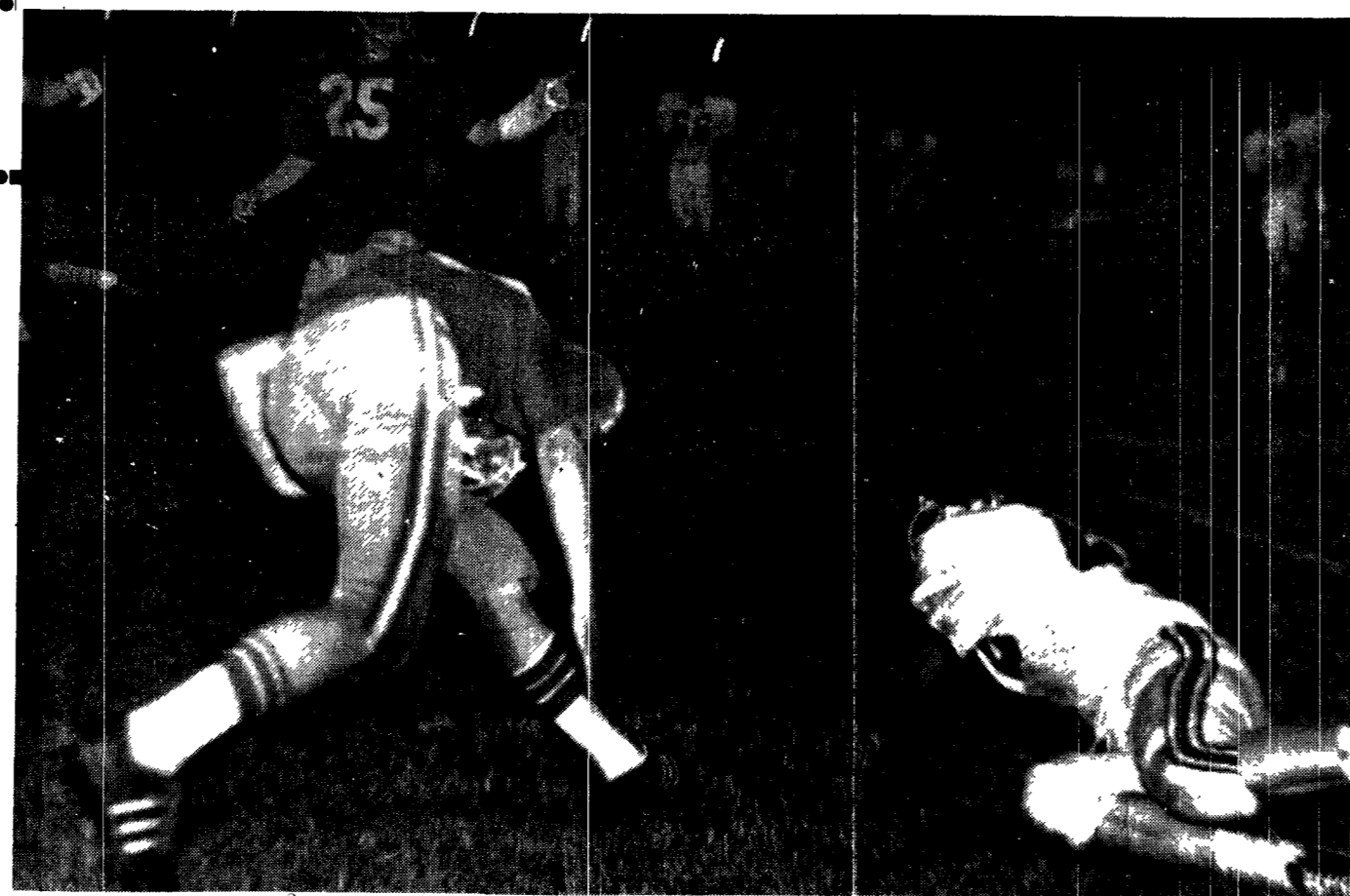
Walking good exercise Grip fall air can be an invitation to exercise and the Washington State Heart Association suggests walking as "the best all-

MUSIC OF THE MASTERS Sunday 2 - 4 pm KVAC - 1490 PAUL BRAGG, Narrator

SHINGLE SAWYERS Immediate openings for experienced Shingle Sawyers to work in Nine Machine Shingle Mill located in the Grays Harbor area.

Rate - Daily : 1. Through 20.75 squares \$38.20 2. Through 21.75 squares \$40.00 3. 22 squares & over \$38.20 + 40¢ on \$1 and 20¢ for off-grade.

CONTACT: Jim Hunter Personnel Manager Aloha Lumber Corporation Aloha, Washington PHONE: 276-4402



Jim Blair (32) regained his balance after being hit by a Hiyak tankster near the steeple. He was second and third efforts which led the speedy Spartan halfback to the end zone on this 47 yard touchdown run. The colorful scoreboard read "Home 20 -- Visitors 12" at the final horn Friday night in Forks.

round exercise there is." In addition to the long-range benefit of helping reduce the possible risk of heart attack, walking can allow a person to do more physical activity without tiring as easily.

Other benefits include providing an outlet for tension; greater resistance to stress and strain; helping a person relax, rest and sleep; making it easier to maintain normal weight (another factor reducing the risk of heart attack); and improving appearance through better posture and trimmer figures.

By walking, the Heart Association means, moving at a fast clip, not just strolling. It may take a few weeks to work up to a snappy pace but it should be done gradually.

It is noted that walking provides the same health benefits as jogging but without the possible stress on the heart or other physical hazards.

Walking can also help an out-of-shape individual work up to the more vigorous fall and winter sports of football, basketball and skiing.

A slight and necessary strain is placed on the heart by walking. That strain can help develop collateral circulation in the heart muscle which can be beneficial to middle-aged persons developing hardening of the arteries.

The Heart Association suggests a regular schedule be developed for walking perhaps beginning with one ten-minute walk twice a day and working toward three twenty-minute walks daily.

---by Lonnie Archibald Forks Forum

Church Services: Grace of Peace Lutheran Church, First Congregational Church, First Baptist Church, Forks Bible Church, Assembly of God Church.

Church Services: Bible School, Morning Wor, Bible School, Morning Service, Youth Services, Evening Worship, Prayer Service.

Church Services: Bible School, Morning Wor, Bible School, Morning Service, Youth Services, Evening Worship, Prayer Service.

Church Services: Bible School, Morning Wor, Bible School, Morning Service, Youth Services, Evening Worship, Prayer Service.

Church Services: Bible School, Morning Wor, Bible School, Morning Service, Youth Services, Evening Worship, Prayer Service.

Church Services: Bible School, Morning Wor, Bible School, Morning Service, Youth Services, Evening Worship, Prayer Service.

Church Services: Bible School, Morning Wor, Bible School, Morning Service, Youth Services, Evening Worship, Prayer Service.

Church Services: Bible School, Morning Wor, Bible School, Morning Service, Youth Services, Evening Worship, Prayer Service.

Church Services: Bible School, Morning Wor, Bible School, Morning Service, Youth Services, Evening Worship, Prayer Service.

Church Services: Bible School, Morning Wor, Bible School, Morning Service, Youth Services, Evening Worship, Prayer Service.

Sunset Highlites

By Fred Jarvis

Mother and I are making beautiful music together. Both of us caught cold and for the past week have been coughing, hacking and sneezing up a storm. A duet like that doesn't win any awards but it's sure noisy.

Some real good shooting this past week, especially by the girls. Judy Klahn hit a hit 230-553 in Tuesday's Afternoon League, with Doris Broder-

son at 175 and Cristl Pitt at 169. Sunset: Gordon McCoy 223, Carl Simmons, 211, Fred Jarvis 213-586. Powder Puff: Helen Thomas 212-588, Anita Bumgarner 192, Anita Johnson 195-586.

Hoos Owl: Leta Rondeau 206-545, Cathy Devees 208, Millie Fagan 182. Thursday Afternoon: Lou Ski 211-506, Billie Cris 197-502, Judy Klahn 179.

Thursday Nite Women: Gladys Allen 200, Woody Hamby 179-514, and Paula Lydia a nice 218-319.

West End: Warren Paul 214, Jim Whitehead 209, Chuck Marsh 552. Friday Doubles: Doris Broder 189, Vicki Klahn 189, Gladys Allen 521.

Early Friday Nite Mixed: Esther Parin 175, Paula Lydia 171-489, Rae West 170, Duke Streeter 244-605, Jess Parin 206.

Late Friday Tee Totals: Cheryl McCoy 168-449, Judy Capp 159, Dick Ski 200-509, Lynn Simmons 193.

Women's Traveling League: Cheryl McCoy 192-501, Lou Ski 182, Billie Cris 181.

Mens Travelling at Laurel: Duke 242-655, Darrell 234-608, Dave Pegram 232-970.

Fred Jarvis 280. Sunday Nite Mixed: Kathy Hamby 205-548, Leta Rondeau 193, Helen Wandke 188.

Jim Hjelmesteth 223, Vern Rondeau 210-520. Monday Doubles: Billie Cris 192, Lou Ski 187-508.

Forks Prairie: Ron Clarke 244-698, Darrell 237-625, John Nagel 212.

Bowlers of the Week: Judy Klahn 200-553, Ron Clark and Duke Streeter 244, Darrell 625.

Students in the WAMI program take the first semester of their freshman year at one of four universities and then enter the University of Washington School of Medicine to continue their regular course work.

When the program is fully operational the students will spend the entire freshman year of their medical studies at one of these schools.

Schwartz said the self-elevation of the first group of students in the program last year "reflects the quality and commitment of all people involved-- faculty, administrators and practicing physicians who served as clinical preceptors."

Refreshments were served in a dining room decorated in a Halloween theme. Hostesses were Mrs. Diane Yothen and Mrs. Darci Maxfield.

Refreshments were served in a dining room decorated in a Halloween theme. Hostesses were Mrs. Diane Yothen and Mrs. Darci Maxfield.

Refreshments were served in a dining room decorated in a Halloween theme. Hostesses were Mrs. Diane Yothen and Mrs. Darci Maxfield.

Refreshments were served in a dining room decorated in a Halloween theme. Hostesses were Mrs. Diane Yothen and Mrs. Darci Maxfield.

Refreshments were served in a dining room decorated in a Halloween theme. Hostesses were Mrs. Diane Yothen and Mrs. Darci Maxfield.

Driver licensing offices to change hours

Jack Nelson, Director of the Department of Motor Vehicles, announced today that effective Tuesday, October 16, the 47 Driver License Examining Offices across the state will shorten their hours by thirty minutes.

"This change was in conformance with the Governor's request to all state agencies to conserve power wherever possible," Nelson stated.

Currently the offices are staffed Tuesday through Saturday from 9:00 A.M. to 6:00 P.M. Under the new schedule, the DLE offices will be opened from 8:30 A.M. to 5:00 P.M.

with the staff taking half-hour lunch periods. This half-hour daily reduction will result in a 7% savings in power usage at a time of the day when power usage reaches near peak levels in homes.

"Most of our DLE stations serve comparatively few people after 5:00 p.m. under the present schedule," Nelson said.

Director for said Bob Koch, Assistant Director for Driver Services, "while many of them have people waiting at the door before 9:00 a.m. We appreciate that the change will inconvenience some, but we feel that the earlier opening will more than offset this." Koch said.

In the past, the 9:00 a.m. and 10:00 a.m. hour has been far busier than that between 5:00 p.m. and 6:00 p.m. The most active hours during the week at the stations are between 3:30 p.m. and 4:30 p.m. due to the influx of student drivers when school ends for the day. But Saturday continues to

be the heaviest workday of all. For further information, contact Bob MacDonald, Information Officer, (753-4009).

BUY ALL YOUR OFFICE SUPPLIES AT THE FORKS FORUM, IN THE KVAC BUILDING.

BUY ALL YOUR OFFICE SUPPLIES AT THE FORKS FORUM, IN THE KVAC BUILDING.

BUY ALL YOUR OFFICE SUPPLIES AT THE FORKS FORUM, IN THE KVAC BUILDING.

BUY ALL YOUR OFFICE SUPPLIES AT THE FORKS FORUM, IN THE KVAC BUILDING.

BUY ALL YOUR OFFICE SUPPLIES AT THE FORKS FORUM, IN THE KVAC BUILDING.

BUY ALL YOUR OFFICE SUPPLIES AT THE FORKS FORUM, IN THE KVAC BUILDING.

BUY ALL YOUR OFFICE SUPPLIES AT THE FORKS FORUM, IN THE KVAC BUILDING.

BUY ALL YOUR OFFICE SUPPLIES AT THE FORKS FORUM, IN THE KVAC BUILDING.

BUY ALL YOUR OFFICE SUPPLIES AT THE FORKS FORUM, IN THE KVAC BUILDING.

BUY ALL YOUR OFFICE SUPPLIES AT THE FORKS FORUM, IN THE KVAC BUILDING.

BUY ALL YOUR OFFICE SUPPLIES AT THE FORKS FORUM, IN THE KVAC BUILDING.

BUY ALL YOUR OFFICE SUPPLIES AT THE FORKS FORUM, IN THE KVAC BUILDING.

BUY ALL YOUR OFFICE SUPPLIES AT THE FORKS FORUM, IN THE KVAC BUILDING.

BUY ALL YOUR OFFICE SUPPLIES AT THE FORKS FORUM, IN THE KVAC BUILDING.

BUY ALL YOUR OFFICE SUPPLIES AT THE FORKS FORUM, IN THE KVAC BUILDING.

EDC ELECTRONIC SCALES BOB SWANSON 374-5593

HARRINGTON'S Town House 102 WEST FRONT STREET - PORT ANGELES, WASHINGTON 98101

Featuring PRIME RIB CHARCOAL BROILED SALMON & STEAKS

GOLDIE'S 7 Days a Week Come in & Meet PROSPECTOR PETE

OPEN 24 HOURS 7 Days a Week Come in & Meet PROSPECTOR PETE

Attention A SPECIAL BOAT OWNERS POLICY IS NOW AVAILABLE FOR BOATS UP TO 23 FEET IN LENGTH.

where do we grow from here? loans for home purchasing and home improvements

INSIDE YOUR MAILBOX The new postal money order system will go into use at the Forks Post Office on October 15, 1978.

WAMI MEDICAL STUDENTS PRAISED Washington State University and the University of Idaho have welcomed their second classes in the WAMI-Wahington, Alaska, Montana, Idaho--decentralized medical education program.

Attention A SPECIAL BOAT OWNERS POLICY IS NOW AVAILABLE FOR BOATS UP TO 23 FEET IN LENGTH.

TOZIER AND RALSTON INSURANCE BROKERS, INC. PORT ANGELES, WASH. CALL COLLECT, 457-9491

Satisfaction guaranteed. FORKS SCHOOL LUNCH MENU OCTOBER 15 - 19, 1978

OLYMPIC VOLKSWAGEN 1536 East Front St. 452-9268

This used car is guaranteed 100% LOCAL MONEY LENDER First Federal Savings & Loan Ass'n

FORKS BUSINESS DIRECTORY

Jim's Appliance Center
In Forks To Serve You With
Seattle Prices Full Line Of
G E Appliances & Service
P.O. BUILDING
374-5352
FREE LOCAL DELIVERY & INSTALLATION

MARTY'S PAINT & BODY SHOP
AUTO GLASS
On Calawah-6 Blocks On The Left--Off Main Street.
Windshields-Body Repair- & Painting--Free Estimates Insurance Work--
PHONE 374-5001

GENERAL CONSTRUCTION REMODELING CONCRETE FINISHING NEW HOMES CABINETS
D.N. QUICK
General Contractor
374-5142
MINI - CAT WORK

FORKS SAND & GRAVEL INC.
Ready Mix Concrete Gravel - Washed - Road Bull Dosing - Shovel Work Road Construction Septic Tanks
PHONE 374-6314

FAR WEST PROPANE INC.
FORKS, WASHINGTON
SALES and SERVICE of New & Used Appliances. For The Best Buy Whirl Pool COMPLETE TRAILER SUPPLIES HEATING EQUIPMENT
Phone 374-0921 For Propane Delivery Serving This Area For 20 Years

INDUSTRIAL REPAIR
HEAVY EQUIPMENT REPAIR
TRACTORS LOG TRUCKS CATS WELDING
ACROSS FROM FORKS AIRPORT
PHONE 374-5287

WHEN YOU GET TIRED OF FOOLING AROUND, GET THAT JOB DONE RIGHT
CALL AN EXPERT
FLETCHER ELECTRIC
ALMAR BLDG. 374-6620

WHITEHEAD'S AUTO PARTS
AT THE CITY LIMITS NORTH OF FORKS
374-6065
PUBLIC NOTICE
IN THE SUPERIOR COURT OF THE STATE OF WASHINGTON IN AND FOR THE COUNTY OF CLALLAM,
IN THE MATTER OF THE ESTATE OF KATHERYN F. SHEARER, Deceased, No. 7339, NOTICE TO CREDITORS:
The undersigned have been appointed and have qualified as Co-Executors of the above estate. All persons having claims against said deceased are required to serve the same, duly verified, on said Theron Reed Shearer and Ronald J. Shearer or WILSON, PLATT & JOHNSON, attorneys of record, and file the same with the Clerk of said Court, together with proof of such service, within four months after the date of first publication of this notice. Date of first publication October 4, 1978.
Theron Reed Shearer
Ronald J. Shearer
Co-Executors of the Estate of Katheryn F. Shearer
WILSON, PLATT & JOHNSON
Attorneys for Estate
112 South Lincoln
Port Angeles, Washington

JOHNS MOTOR CO.
"GENERATOR, STARTER AND ALTERNATOR REBUILDING,"
DYNA-VISION TUNE UP BRAKE RELINING
FORKS 374-5094
WES' CHEVRON
Service Supreme
Gas, Oil, Tires, Batteries TRUCK SERVICE
Wholesale Distributorship
FREE PICKUP & DELIVERY
Phone 374-5418
FORKS

PUBLIC NOTICE

PUBLIC NOTICE
RESOLUTION NO. 60 1978
RESOLUTION FOR COURT HEARING AND NOTICE OF HEARING
ON EXCHANGE OF COUNTY PROPERTY
WHEREAS, Clallam County is the owner of real property legally described as the east 88.6' of Lot 9, Block 9 and Lots 20 and 30, Block 8 of Beacon Hill Addition located in the Southeast quarter of the Northwest quarter of Section 14, Township 30 North, Range 6 West W.M., situated in Clallam County, Washington, and
WHEREAS, Jack Del Guzzi is the owner of certain property legally described as Lot 1, Block 9 except the east 88.6' and Lots 1 and 2, Block 7 of Beacon Hill Addition located in the Southeast quarter of the Northwest quarter of Section 14, Township 30 North, Range 6 West, W.M., situated in Clallam County, Washington, which property is adjacent to the parcels owned by Clallam County, and
WHEREAS, it would be to the mutual benefit of Clallam County, and to Jack Del Guzzi to realign the mutual boundaries of the property owned by the parties, by an exchange of property, now
THEREFORE BE IT RESOLVED by the Board of County Commissioners of Clallam County, Washington, that the office of the Prosecuting Attorney for Clallam County, Washington, is authorized and directed to prepare necessary papers in order to get a decree of the Superior Court from Clallam County authorizing the exchange of property owned by Clallam County for property owned by Jack Del Guzzi, and that a public hearing on the matter of the exchange of said property under said term, be held on the 23rd day of October, 1978 at 10:00 o'clock p.m. or as soon thereafter as the matter be heard at the Superior Courtroom, Clallam County, Washington, and,
BE IT FURTHER RESOLVED that the Clerk of said Court of County Commissioners give notice of such hearing in the manner prescribed by law.
DATED THIS 12th day of July, 1978.
BOARD OF CLALLAM COUNTY COMMISSIONERS
D. I. CAULKINS, CHAIRMAN
WILLIAM H. KNAPPAN
FRANK A. FEELEY
ATTEST:
ALICE C. THORNE
CLERK OF THE BOARD

Published Thursday, October 11 and 18, 1978 in the Forks Forum, Forks, Wash.
RADIAL TIRE CARE TIPS
The Tire Industry Safety Council has issued a list of special tips on care of radial tires, which are growing in popularity by the hour and bounds.
"Radial tires are made differently from bias ply and bias-belted tires," said Council Chairman Malcolm R. Lovell, Jr. "They require slightly different care. Motorists changing to radials should be aware of the special characteristics and maintenance requirements of these high performance tires."
Here is the Council's list of tips on radial tires:
* Always check the air pressure of radials before adding air. They may look "soff" while properly inflated, because the sidewalls flex more than other tires. Make sure the air pressure is what the car manufacturer recommends--no more, no less.
* Rotate radials from front to rear on the same side of the car. Never use a cross-rotation pattern.
* Punctures in radials may be repaired only if they occur in the center area of the tread, between the two major outer grooves, and are less than one-quarter inch in diameter. Never try to repair a puncture in the shoulder or sidewall.
* Use radial snow tires, if you are going to put on any snow tires at all with your other radials.
* For best all around performance radial tires should be used on all wheel positions. But if you must "mix" tires of different construction, always put the radials on the rear axle. Never "mix" different types of tires on the same axle. Check the owner's manual or the instructions affixed to the

classified ads
get the job done
Our Representative is at Olympic Pharmacy in Forks every 2nd and 4th Friday of every month and has been for 3 years. (12 noon till 5 p.m.)
FREE Hearing Tests and demonstrations of how a hearing aid may help you.
FREE Test of your present aid on our electronic scope. See what frequencies your hearing aid produces.
REPAIR and service on all makes of hearing aids.
TRY before you buy with our unique "TRIAL BEFORE PURCHASE ON RENTAL PLAN".
HEARING AID SPECIALISTS
707 E. 1st Port Angeles
Olympic Pharmacy, Forks
Olympic Peninsula's Home Owned Full-Time Hearing Aid Service
Let Buddy Howard start your day on right at 8:00 a.m. on KVAC.

SEPTIC TANKS NOT DOOMED TO DISPOSAL
(Reprint from Seattle Times Sunday, Sept. 30, 1978, P. 2, Sec. F)
The septic tank is far from becoming a disappearing adjunct to residential development. On the contrary, there are signs that ever governmental agencies are beginning to recognize the part it plays.
The Federal Environmental Protection Agency has published a series on retaining waste water to the ground rather than collecting it, treating it and discharging it into the nearest large body of water.
The State Health Department published new septic tank regulations in January and then promptly asked its engineering department to remedy the whole private sewage-treatment situation.
King County gave ample evidence that septic tanks are still in the picture with the regulation which went into effect in August that any tank installed in the county must have two compartments.
One of the leaders in getting various levels of government to take another look at the problem has been Arnold Kegel, principal and engineer with Ruckelshaus & Associates, Inc., a Seattle engineer and planner that has done sub-division throughout the Northwest.
Kegel, an agricultural engineer by training, is convinced that municipal sewer systems, especially large ones, create their own kind of problem -- they disrupt the hydrological cycle through which water tables are maintained.
Sewer systems using primary or secondary treatment, he maintains, are merely giant septic tanks anyhow. But they collect waste water from small drainage basins which otherwise would have the ground water replenished by the water filtering down.
But that is another battle. Kegel's primary concern is getting recognition of alternate systems of sewage disposal from government agencies.
State law requires that no one other than sewer districts can discharge waste water on the face of the earth. The King County Health Department requires that all structures must be hooked up to either a sewer or a septic tank.
That ignores such advances as the recirculating toilet like those on airlines which merely screen out solids, and store them and then cool and deodorize the water, which is reused. At intervals the system is pumped out and can be processed through standard sewage-treatment systems.
Also available and developing rapidly are systems which incinerate the sewage and caustic systems--such as "sand-cans"--which burn the waste chemically. Kegel's King County technical advisory committee has agreed to look into a revamp of the plumbing code as a start toward making the alternatives legal.
Increasing demands on water supplies may eventually bring about acceptance of the recirculating system if only because it uses one tenth of a gallon per flush compared with the standard fixture's five gallons.
Kegel said his firm designed a recreational vehicle park near Spokane in 1970 which has been using recirculating toilets for two years without malfunctions. The systems were pumped this year and were only 55 per cent of capacity despite heavy use of the park.
The addition of a "baffle" to septic tanks, which is an interior wall separating the system into two connected compartments, should make them better able to stand up against the twin enemies of the friendly bacteria which do the work down in the septic tank--hot water and strong detergents.
A septic system, for those not acquainted with the process, collects all waste going down drains for a house and puts it into a sealed tank.
Gasses and other light materials float to the surface and solids drop to the bottom while the water flows through the tank and out the other side into an underground drain field. Other bacteria combine with oxygen to complete the purification process.
There are some of it which seeps into the soil and eventually filters into the groundwater supply, some evaporates into the air and the rest is picked up by plants and trees.
As long as the bacteria are breaking down the solids and the grease level doesn't get so heavy it chokes the system, the septic tank is the most efficient method of treating waste, according to Kegel.
The only way to make it more efficient, Kegel said, would be to treat the "gray water" which comes from the sink drains separately from the "black water" which comes from the toilets. This would control the volume of water entering the system.
Properly filtered to remove grease and soap, Kegel said, gray water could be discharged directly from the house to be used for irrigation.
But there is the state law that no person shall discharge waste water directly on the face of the land. Gray water, then, must be routed through the treatment process and the trouble with the pathogenic bacteria which makes sewage a health hazard is that it takes only a little to contaminate a lot of otherwise clean water.
With more water flowing through the system, there is a greater chance of flushing out hazardous bacteria.
Water handled by the system becomes one of the major problems in keeping the septic system balanced.
The Washington Land Use Association, representing major recreational developers, is going to attack the problem from another angle.
It will sponsor a seminar Wednesday at the Pacific Science Center for 140 to 200 sanitarians from Washington, Oregon, Idaho, Alaska and at least part of British Columbia to discuss the latest research in septic systems.
The sanitarian, Kegel said, is often the weakest link in the enforcement of sewage-treatment codes. He is trained in public health, not in sanitary engineering, but inspection of systems is pushed off on him by building and public works officials under the theory that it affects public health.
In desperation, he follows the only book available, the Federal Housing Administration's handbook, which is largely based on Eastern soil conditions, and a Public Health Service publication on standards.
"Sometimes it applies here and doesn't apply sometimes," Kegel says, "but the sanitarian has to go by something."
This year's state regulations were an outgrowth of pressure by sanitarians for something more workable but, Kegel said, they concentrated mainly in advocating hookup to sewer systems and increasing minimum lot sizes for areas without sewers.
"That thinking is about 10 years obsolete," he said.
DONATIONS WELCOMED
Forks Sewer Project Association
submitted by Guy Decker

YOU GET MORE year-round SAVINGS

TOP QUALITY MEATS AT BUDGET PRICES
U.S.D.A. CHOICE - BONE-IN
ROUND STEAKS
KRAFT 16-OZ. BARBECUE SAUCE 39¢
22-OZ. GENUINE OR KOSHER FARMER'S DILLS 45¢
DRAW A BEAD ON THESE GREAT HUNTING VALUES!
JIF 18-OZ. PEANUT BUTTER 65¢
NORWEST 20-OZ. STRAWBERRY JAM 59¢
BETTY CROCKER'S HAMBURGER HELPER 49¢
303 TINS DELMONTE APRICOTS 39¢
15-OZ. NEW ENGLAND STYLE SNOW'S CLAM CHOWDER 3/\$1.00
LIPTON'S DRY ONION SOUP 39¢
28-OZ. B&M BAKED BEANS 39¢
2-LB. TIN NESTLE'S QUIK 89¢
TOM SCOTT MIXED NUTS 69¢
KING SIZE-4 KINDS NESTLE'S CHOCOLATE BARS 3/\$1.00
4 ROLL PACKS CORONET BATHROOM TISSUE 2/79¢
6-OZ. JELLO FLAVORED GELATIN 5/\$1.00
10.5-OZ. PKG. KRAFT MINIATURE MARSHMALLOWS 2/49¢
303 TINS IGA FRUIT COCKTAIL 3/89¢
2-LB. YELLOW JOLLYTIME POPCORN 29¢
BULK RATE U.S. POSTAGE FORKS, WASH. PERMIT #4

TIME TO SHOP FOR FALL BAKING NEEDS
THE PERFECT TOPPING 8-oz. DREAM WHIP 79¢
BAKER'S 12-OZ. CHOCOLATE CHIPS 49¢
14-OZ. PREMIUM OR ANGEL FLAKE BAKER'S COCONUT 59¢
BETTY CROCKER'S 20.5-OZ. BAR COOKIE MIX 85¢
BETTY CROCKER'S NEW FRUIT HELPER 39¢
WILDERNESS 21-OZ. APPLE PIE FILLING 39¢
FEATURING ALL-NEW DISCOUNT DRUG SECTION
"COMPARE OUR PRICES!"

PRODUCE DEPARTMENT
AA WHITE LARGE EGGS 69¢ DOZEN
WASHINGTON GROWN DRY YELLOW ONIONS 10¢ lb.
10-LB. WASHINGTON NO. 1 RUSSET POTATOES 69¢ EACH
1-LB. PKG. CELLO BAGGED CARROTS 2/25¢
KRAFT 8-OZ. FRENCH DRESSING 35¢
15-OZ. TINS. 5 FLAVORS FRISKIES DOG FOOD 6/\$1.00
28-OZ. LYSOL CLEANER 79¢
6 1/2-OZ. TINS PETUNA CAT FOOD 8/\$1.00
5-QT. PUREX BLEACH 63¢
KING SIZE DOWNY FABRIC SOFTENER \$1.49
8-LB. BAGS BLUE MOUNTAIN INSTANT MIX \$1.49
22-OZ. AEROSOL WOOLITE SPRAY AND VACUUM \$1.39

FROZEN FOODS
2-LB. BAGS ORE-IDA HASH BROWNS 3/\$1.00
9-OZ. COOL WHIP 49¢
13-OZ. EGGO WAFFLES 39¢
TREE TOP APPLE CIDER 49¢